

UNITE TO LEAD THE WAY.



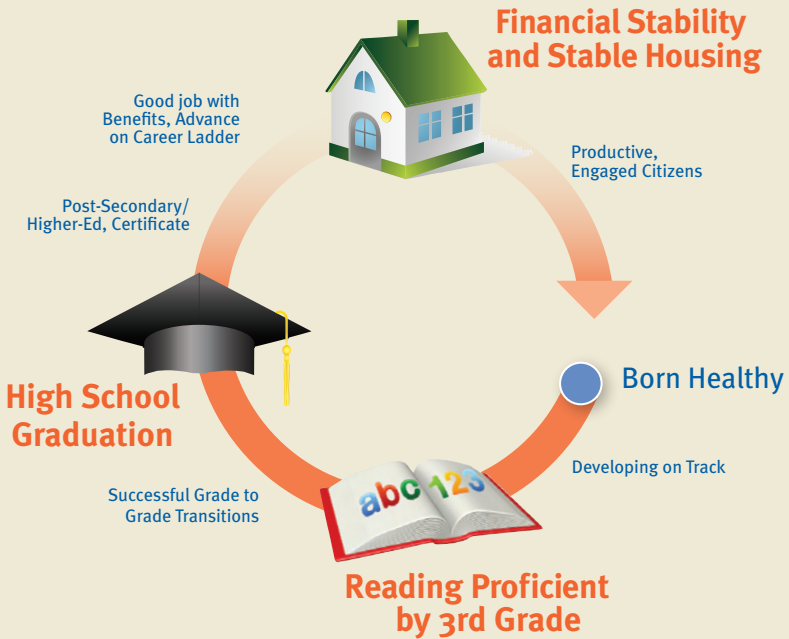
GIVE. ADVOCATE. VOLUNTEER. LIVE UNITED®



United Way
of Massachusetts Bay
and Merrimack Valley

OUR ECONOMIC INDICATORS

Everything we do follows an interconnected, strategic continuum of milestones that are also indicators of our quality of life and economic vitality.



Why these indicators matter:

Reading proficiency is a key predictor of high school graduation.

We partnered to create a powerful program that stemmed summer learning loss and helped 72% of students maintain or increase reading skills.

Preventing 1,000 drop outs each year would add \$15 million to the Massachusetts economy.

We're ensuring that 198,000 kids are enrolled in quality school age programs and that 21,500 receive academic help.

Children do not succeed if their families are struggling.

We prevented 10,000 families from becoming homeless and helped 15,000 gain job and financial skills.

AN INVITATION TO JOIN OUR REGION'S MOST INFLUENTIAL PHILANTHROPISTS

United Way's Leadership Societies are where leaders from across our community come together to help people today in ways that create a stronger tomorrow for all. By recruiting leaders with passion, commitment and expertise, we're taking on challenges that directly affect our region's economic vitality and quality of life.

Join a society to:

- Change the lives of 521,000 struggling individuals by empowering financial stability and self-reliance.
- Champion a system of early education that catches developmental delays early, fosters healthy brain development and promotes school readiness.
- Enable 33,000 children to attend quality early childhood programs.
- Support the 6,500 3rd graders that are not reading proficiently.
- Impact the 9,100 students that are not graduating high school on time.
- Create a more competitive workforce to drive our future economy.

Together, we can do more than any of us can alone.

That's what it means to **LIVE UNITED.**

Please join us to LEAD THE WAY.

WHEN LEADERS UNITE, *everyone* BENEFITS.

As a member of a United Way Leadership Society, you'll join a network of Boston's philanthropic, business and community leaders. No other organization has the scope and expertise to unite hundreds of partner agencies with businesses, community organizations, government, volunteers and private foundations around a common vision for the common good.

Connect with others who share your commitment

Our work unites like-minded members who share a passion for strengthening our community, and creating lasting, systemic change that addresses our region's most urgent needs.



A community discussion on education brings together Superintendent of the Boston Public Schools, Dr. Carol Johnson; "Out of Harm's Way" founder and National Tocqueville Award recipient, Sandy Edgerley; and United Way's Angela Johnson.

Boston's Most Sought-After Invitations

Members are invited to a variety of events throughout the year.



Tom O'Donnell, on behalf of Ropes & Gray, LLP, accepts the Tocqueville Award for corporate excellence from Society Co-Chair Robert Beal.

Leadership Societies



Tocqueville Society

This prestigious national society counts many of our area's most influential philanthropic leaders as members.

<i>Membres de la Société</i>	\$10,000 – \$24,999
<i>Ordre de Liberté</i>	\$25,000 – \$49,999
<i>Ordre d'Égalité</i>	\$50,000 – \$99,999
<i>La Société Nationale</i>	\$100,000 – \$999,999
<i>La Table Ronde des Millions de Dollars</i>	\$1,000,000 – plus

Beacon Society

A vibrant, committed community of philanthropic stars on the rise.

Leaders	\$1,000 – \$2,499
Principals	\$2,500 – \$4,999
Torchbearer	\$5,000 – \$9,999

Direct Line of Sight

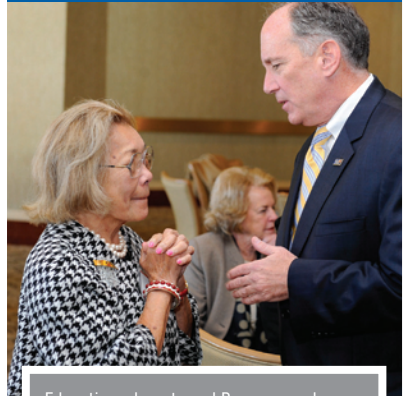
Members have a meaningful connection to United Way's leadership team, ongoing work and results in the community, with unique opportunities to volunteer and see our work in action.



Beacon Society member Andrea Hayward volunteers at the Community Baby Shower, a Women's Initiative event connecting expectant moms with resources and information on healthy child development.

Powerful Presence

Members utilize United Way's position as one of the world's premier philanthropic organizations to focus on local issues.



Education advocate and Beacon member Helen Chin-Schlichte shares thoughts with United Way President Michael Durkin at one of his regularly scheduled coffees with leaders.

HOW TO

LIVE UNITED



We invite you to help others while leading real, lasting change in our community.

GIVE.

So much depends on your pledge. In addition, there are many more ways to impact our community's future through a gift to United Way. Whether you choose an outright gift, stock, or a planned gift, we'll work with you to find the vehicle that best fits your needs.

ADVOCATE.

You are the one that others listen to. Your leadership skills can inspire others to advance the common good. Lend your vision, voice, and talents within a caring community of committed professionals.

VOLUNTEER.

Your expertise will lead the way. Volunteer as an individual. Organize a volunteer activity. Or, take on a longer-term commitment as a board or committee member. You'll instantly see the impact you're having in the community.

Get involved and learn more at supportunitedway.org

LIVE UNITED ONLINE.

Blog with us at speakunited.org



Stay connected

